

Poston Scale Packet

Bassoon

Jenn Bock

Concert F Major

One Octave Scale and Arpeggio



Full Range Scale



Scale in Thirds



Arpeggio Exercise



Concert Bb Major

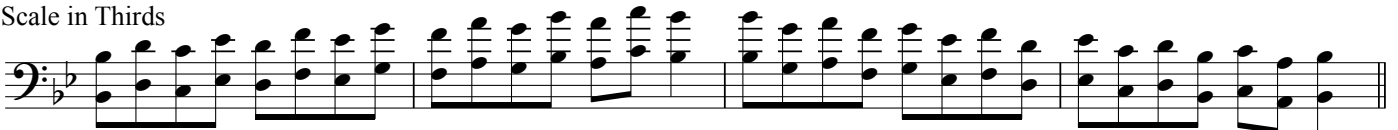
One Octave Scale and Arpeggio



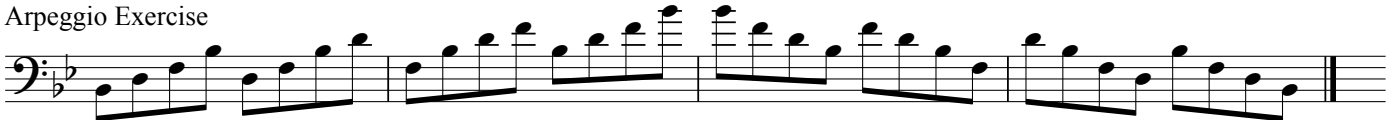
Full Range Scale



Scale in Thirds



Arpeggio Exercise



Concert Eb Major

One Octave Scale and Arpeggio



Full Range Scale



Scale in Thirds



Arpeggio Exercise

**Concert Ab Major**

One Octave Scale and Arpeggio



Full Range Scale



Scale in Thirds



Arpeggio Exercise

**Concert Db Major**

One Octave Scale and Arpeggio



Full Range Scale



Scale in Thirds



Arpeggio Exercise

Musical notation for an arpeggio exercise in Concert F# (Gb) Major, bass clef, 4/4 time. The exercise consists of four measures of eighth-note arpeggios: ascending, descending, ascending, and descending. The key signature has three flats (Bb, Eb, Ab).

Concert F# (Gb) Major

One Octave Scale and Arpeggio

Musical notation for a one-octave scale and arpeggio in Concert F# (Gb) Major, bass clef, 4/4 time. The first measure shows the ascending scale, and the second measure shows the descending scale. The third measure shows the ascending arpeggio, and the fourth measure shows the descending arpeggio. The key signature has three flats (Bb, Eb, Ab).

Full Range Scale

Musical notation for a full range scale in Concert F# (Gb) Major, bass clef, 4/4 time. The first measure shows the ascending scale, and the second measure shows the descending scale. The key signature has three flats (Bb, Eb, Ab).

Scale in Thirds

Musical notation for a scale in thirds in Concert F# (Gb) Major, bass clef, 4/4 time. The exercise consists of four measures of eighth-note pairs of notes in thirds, ascending and then descending. The key signature has three flats (Bb, Eb, Ab).

Arpeggio Exercise

Musical notation for an arpeggio exercise in Concert F# (Gb) Major, bass clef, 4/4 time. The exercise consists of four measures of eighth-note arpeggios: ascending, descending, ascending, and descending. The key signature has three flats (Bb, Eb, Ab).

Concert B Major

One Octave Scale and Arpeggio

Musical notation for a one-octave scale and arpeggio in Concert B Major, bass clef, 4/4 time. The first measure shows the ascending scale, and the second measure shows the descending scale. The third measure shows the ascending arpeggio, and the fourth measure shows the descending arpeggio. The key signature has two sharps (F#, C#).

Full Range Scale

Musical notation for a full range scale in Concert B Major, bass clef, 4/4 time. The first measure shows the ascending scale, and the second measure shows the descending scale. The key signature has two sharps (F#, C#).

Musical notation for a full range scale in Concert B Major, bass clef, 4/4 time. The first measure shows the ascending scale, and the second measure shows the descending scale. The key signature has two sharps (F#, C#).

Scale in Thirds

Musical notation for a scale in thirds in Concert B Major, bass clef, 4/4 time. The exercise consists of four measures of eighth-note pairs of notes in thirds, ascending and then descending. The key signature has two sharps (F#, C#).

Arpeggio Exercise

Musical notation for an arpeggio exercise in Concert B Major, bass clef, 4/4 time. The exercise consists of four measures of eighth-note arpeggios: ascending, descending, ascending, and descending. The key signature has two sharps (F#, C#).

Concert E Major

One Octave Scale and Arpeggio



Full Range Scale



Scale in Thirds



Arpeggio Exercise

**Concert A Major**

One Octave Scale and Arpeggio



Full Range Scale



Scale in Thirds



Arpeggio Exercise

**Concert D Major**

One Octave Scale and Arpeggio



Full Range Scale



Scale in Thirds



Arpeggio Exercise



Concert G Major

One Octave Scale and Arpeggio

Full Range Scale

Scale in Thirds

Arpeggio Exercise

Concert C Major

One Octave Scale and Arpeggio

Full Range Scale

Scale in Thirds

Arpeggio Exercise

Concert Bb Chromatic Scale- One Octave

Concert F Chromatic

6 Full Range Chromatic

Two staves of musical notation in bass clef. The first staff contains two lines of chromatic scales: the first line is an ascending scale from G2 to G3, and the second line is a descending scale from G3 to G2. The second staff contains two lines of chromatic scales: the first line is an ascending scale from F2 to F3, and the second line is a descending scale from F3 to F2. The key signature is one flat (Bb).

The Grand Master Scale
One Octave

Seven staves of musical notation in bass clef, each representing a different key signature. Each staff shows an ascending and a descending scale. The key signatures are: F (one flat), Bb (two flats), Eb (three flats), Ab (four flats), Db (five flats), B (two sharps), and E (three sharps).

The Grand Master Scale
Full Range

Three staves of musical notation in bass clef, each representing a different key signature. Each staff shows an ascending and a descending scale. The key signatures are: F (one flat), Bb (two flats), and C (no sharps or flats).

E_b



First staff of music, Eb scale, bass clef, 4/4 time signature. The scale consists of eight measures of eighth notes: E-flat, F, G, A-flat, B-flat, C, D, E-flat. The final measure contains a whole note E-flat.

A_b



Second staff of music, Ab scale, bass clef, 4/4 time signature. The scale consists of eight measures of eighth notes: A-flat, B-flat, C, D, E-flat, F, G, A-flat. The final measure contains a whole note A-flat.

D_b



Third staff of music, Db scale, bass clef, 4/4 time signature. The scale consists of eight measures of eighth notes: D-flat, E-flat, F, G, A-flat, B-flat, C, D-flat. The final measure contains a whole note D-flat.

G_b

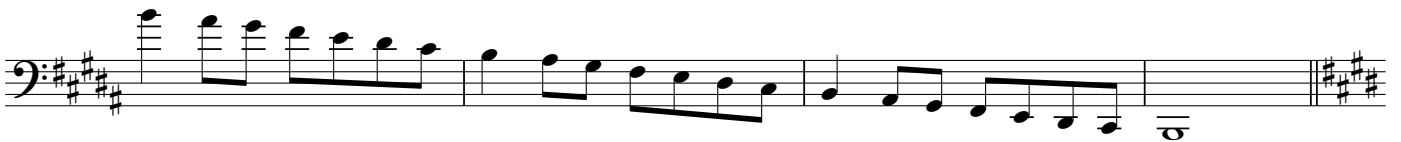


Fourth staff of music, Gb scale, bass clef, 4/4 time signature. The scale consists of eight measures of eighth notes: G-flat, A-flat, B-flat, C, D, E-flat, F, G-flat. The final measure contains a whole note G-flat.

B



Fifth staff of music, B scale, bass clef, 4/4 time signature. The scale consists of eight measures of eighth notes: B, C, D, E, F-sharp, G-sharp, A-sharp, B. The final measure contains a whole note B.



Second staff of music for B scale, bass clef, 4/4 time signature. The scale consists of eight measures of eighth notes: B, C, D, E, F-sharp, G-sharp, A-sharp, B. The final measure contains a whole note B.

E



Sixth staff of music, E scale, bass clef, 4/4 time signature. The scale consists of eight measures of eighth notes: E, F-sharp, G-sharp, A, B, C-sharp, D-sharp, E. The final measure contains a whole note E. A small 'A' is written at the end of the staff.



Second staff of music for E scale, bass clef, 4/4 time signature. The scale consists of eight measures of eighth notes: E, F-sharp, G-sharp, A, B, C-sharp, D-sharp, E. The final measure contains a whole note E.

D



Seventh staff of music, D scale, bass clef, 4/4 time signature. The scale consists of eight measures of eighth notes: D, E, F-sharp, G, A, B, C-sharp, D. The final measure contains a whole note D.

G

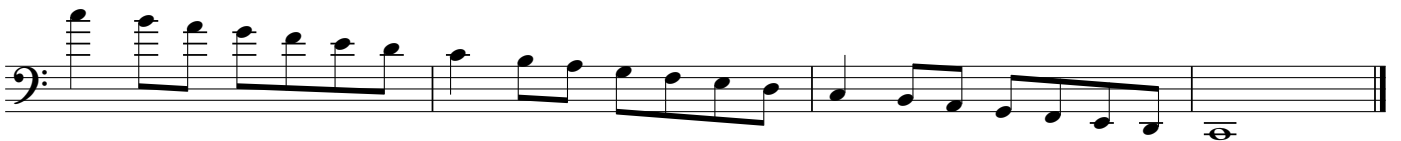


Eighth staff of music, G scale, bass clef, 4/4 time signature. The scale consists of eight measures of eighth notes: G, A, B, C, D, E, F-sharp, G. The final measure contains a whole note G.

C



Ninth staff of music, C scale, bass clef, 4/4 time signature. The scale consists of eight measures of eighth notes: C, D, E, F, G, A, B, C. The final measure contains a whole note C.



Second staff of music for C scale, bass clef, 4/4 time signature. The scale consists of eight measures of eighth notes: C, D, E, F, G, A, B, C. The final measure contains a whole note C.