

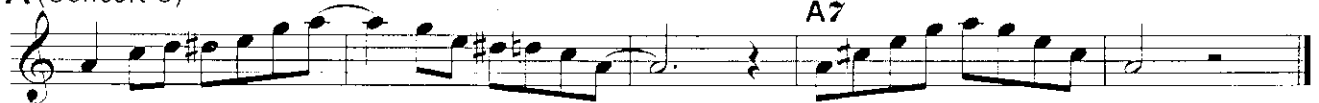
Alto/Bari Sax

Blues Scales w/ Dominant 7th Arpeggios

E (Concert G)



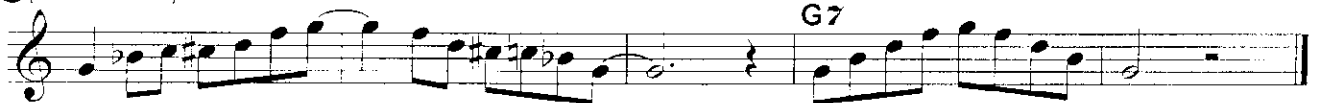
A (Concert C)



D (Concert F)



G (Concert B \flat)



C (Concert E \flat)



F (Concert A \flat)



B \flat (Concert D \flat)



Tenor Sax

Blues Scales w/ Dominant 7th Arpeggios

A (Concert G) A7

This block shows the musical notation for the A (Concert G) blues scale and its corresponding dominant 7th arpeggio. The scale is written in treble clef with a key signature of one sharp (F#). The scale notes are G, A, B, C, D, E, F#, G. The arpeggio is shown as a sequence of notes: G, B, D, F#, G.

D (Concert C) D7

This block shows the musical notation for the D (Concert C) blues scale and its corresponding dominant 7th arpeggio. The scale is written in treble clef with a key signature of no sharps or flats. The scale notes are C, D, E, F, G, A, B, C. The arpeggio is shown as a sequence of notes: D, F, A, C, D.

G (Concert F) G7

This block shows the musical notation for the G (Concert F) blues scale and its corresponding dominant 7th arpeggio. The scale is written in treble clef with a key signature of two flats (Bb, Eb). The scale notes are F, G, Ab, Bb, C, D, Eb, F. The arpeggio is shown as a sequence of notes: G, Bb, D, F, G.

C (Concert B) C7

This block shows the musical notation for the C (Concert B) blues scale and its corresponding dominant 7th arpeggio. The scale is written in treble clef with a key signature of one flat (Bb). The scale notes are B, C, D, Eb, E, F, G, C. The arpeggio is shown as a sequence of notes: C, Eb, G, Bb, C.

F (Concert E) F7

This block shows the musical notation for the F (Concert E) blues scale and its corresponding dominant 7th arpeggio. The scale is written in treble clef with a key signature of two flats (Bb, Eb). The scale notes are E, F, G, Ab, Bb, C, D, F. The arpeggio is shown as a sequence of notes: F, Ab, C, Eb, F.

Bb (Concert A) Bb7

This block shows the musical notation for the Bb (Concert A) blues scale and its corresponding dominant 7th arpeggio. The scale is written in treble clef with a key signature of two flats (Bb, Eb). The scale notes are A, Bb, C, D, Eb, F, G, Bb. The arpeggio is shown as a sequence of notes: Bb, D, F, Ab, Bb.

Eb (Concert D) Eb7

This block shows the musical notation for the Eb (Concert D) blues scale and its corresponding dominant 7th arpeggio. The scale is written in treble clef with a key signature of three flats (Bb, Eb, Ab). The scale notes are D, Eb, F, G, Ab, Bb, C, Eb. The arpeggio is shown as a sequence of notes: Eb, G, Bb, D, Eb.

Trumpet

Blues Scales w/ Dominant 7th Arpeggios

A (Concert G)

Musical notation for the A (Concert G) blues scale and A7 arpeggio. The scale is written in treble clef, starting on G4 and ending on G4. The arpeggio is written in treble clef, starting on G4 and ending on G4. The key signature has one sharp (F#).

D (Concert C)

Musical notation for the D (Concert C) blues scale and D7 arpeggio. The scale is written in treble clef, starting on C4 and ending on C4. The arpeggio is written in treble clef, starting on C4 and ending on C4. The key signature has two sharps (F# and C#).

G (Concert F)

Musical notation for the G (Concert F) blues scale and G7 arpeggio. The scale is written in treble clef, starting on F3 and ending on F3. The arpeggio is written in treble clef, starting on F3 and ending on F3. The key signature has two flats (Bb and Eb).

C (Concert B)

Musical notation for the C (Concert B) blues scale and C7 arpeggio. The scale is written in treble clef, starting on B2 and ending on B2. The arpeggio is written in treble clef, starting on B2 and ending on B2. The key signature has three flats (Bb, Eb, and Ab).

F (Concert Eb)

Musical notation for the F (Concert Eb) blues scale and F7 arpeggio. The scale is written in treble clef, starting on Eb3 and ending on Eb3. The arpeggio is written in treble clef, starting on Eb3 and ending on Eb3. The key signature has three flats (Bb, Eb, and Ab).

Bb (Concert Ab)

Musical notation for the Bb (Concert Ab) blues scale and Bb7 arpeggio. The scale is written in treble clef, starting on Ab2 and ending on Ab2. The arpeggio is written in treble clef, starting on Ab2 and ending on Ab2. The key signature has four flats (Bb, Eb, Ab, and Db).

Eb (Concert D)

Musical notation for the Eb (Concert D) blues scale and Eb7 arpeggio. The scale is written in treble clef, starting on D2 and ending on D2. The arpeggio is written in treble clef, starting on D2 and ending on D2. The key signature has four flats (Bb, Eb, Ab, and Db).

Trombone

Blues Scales w/ Dominant 7th Arpeggios

(Concert G)

Musical notation for Concert G, showing a blues scale and a dominant 7th arpeggio (G7) in the bass clef.

(Concert C)

Musical notation for Concert C, showing a blues scale and a dominant 7th arpeggio (C7) in the bass clef.

(Concert F)

Musical notation for Concert F, showing a blues scale and a dominant 7th arpeggio (F7) in the bass clef.

(Concert B)

Musical notation for Concert B, showing a blues scale and a dominant 7th arpeggio (B7) in the bass clef.

(Concert E)

Musical notation for Concert E, showing a blues scale and a dominant 7th arpeggio (E7) in the bass clef.

(Concert A)

Musical notation for Concert A, showing a blues scale and a dominant 7th arpeggio (A7) in the bass clef.

(Concert D)

Musical notation for Concert D, showing a blues scale and a dominant 7th arpeggio (D7) in the bass clef.

Piano

Blues Scales w/ Dominant 7th Arpeggios

(Concert G) G7

This system shows the G blues scale and G7 arpeggio. The scale is written in two staves: the right hand (treble clef) and the left hand (bass clef). The scale consists of the notes G, A, B, C, D, E, F, G. The arpeggio is shown as a sequence of notes: G, B, D, F, G.

(Concert C) C7

This system shows the C blues scale and C7 arpeggio. The scale is written in two staves: the right hand (treble clef) and the left hand (bass clef). The scale consists of the notes C, D, E, F, G, A, B, C. The arpeggio is shown as a sequence of notes: C, E, G, B, C.

(Concert F) F7

This system shows the F blues scale and F7 arpeggio. The scale is written in two staves: the right hand (treble clef) and the left hand (bass clef). The scale consists of the notes F, G, A, B, C, D, E, F. The arpeggio is shown as a sequence of notes: F, A, C, E, F.

(Concert B \flat) B \flat 7

This system shows the B \flat blues scale and B \flat 7 arpeggio. The scale is written in two staves: the right hand (treble clef) and the left hand (bass clef). The scale consists of the notes B \flat , C, D, E, F, G, A, B \flat . The arpeggio is shown as a sequence of notes: B \flat , D, F, A, B \flat .

(Concert E \flat) E \flat 7

This system shows the E \flat blues scale and E \flat 7 arpeggio. The scale is written in two staves: the right hand (treble clef) and the left hand (bass clef). The scale consists of the notes E \flat , F, G, A, B, C, D, E \flat . The arpeggio is shown as a sequence of notes: E \flat , G, B, D, E \flat .

(Concert A \flat) A \flat 7

This system shows the A \flat blues scale and A \flat 7 arpeggio. The scale is written in two staves: the right hand (treble clef) and the left hand (bass clef). The scale consists of the notes A \flat , B, C, D, E, F, G, A \flat . The arpeggio is shown as a sequence of notes: A \flat , C, E, G, A \flat .

(Concert D \flat) D \flat 7

This system shows the D \flat blues scale and D \flat 7 arpeggio. The scale is written in two staves: the right hand (treble clef) and the left hand (bass clef). The scale consists of the notes D \flat , E, F, G, A, B, C, D \flat . The arpeggio is shown as a sequence of notes: D \flat , F, A, C, D \flat .

Guitar

Blues Scales w/ Dominant 7th Arpeggios

(Concert G)

Musical notation for the Concert G scale and G7 arpeggio. The scale is written in treble clef, starting on G4 and ending on G5. The G7 arpeggio is written in treble clef, starting on G4 and ending on G5. The key signature has one sharp (F#).

(Concert C)

Musical notation for the Concert C scale and C7 arpeggio. The scale is written in treble clef, starting on C4 and ending on C5. The C7 arpeggio is written in treble clef, starting on C4 and ending on C5. The key signature has two sharps (F# and C#).

(Concert F)

Musical notation for the Concert F scale and F7 arpeggio. The scale is written in treble clef, starting on F4 and ending on F5. The F7 arpeggio is written in treble clef, starting on F4 and ending on F5. The key signature has two flats (Bb and Eb).

(Concert Bb)

Musical notation for the Concert Bb scale and Bb7 arpeggio. The scale is written in treble clef, starting on Bb4 and ending on Bb5. The Bb7 arpeggio is written in treble clef, starting on Bb4 and ending on Bb5. The key signature has three flats (Bb, Eb, and Ab).

(Concert Eb)

Musical notation for the Concert Eb scale and Eb7 arpeggio. The scale is written in treble clef, starting on Eb4 and ending on Eb5. The Eb7 arpeggio is written in treble clef, starting on Eb4 and ending on Eb5. The key signature has three flats (Bb, Eb, and Ab).

(Concert Ab)

Musical notation for the Concert Ab scale and Ab7 arpeggio. The scale is written in treble clef, starting on Ab4 and ending on Ab5. The Ab7 arpeggio is written in treble clef, starting on Ab4 and ending on Ab5. The key signature has four flats (Bb, Eb, Ab, and Db).

(Concert Db)

Musical notation for the Concert Db scale and Db7 arpeggio. The scale is written in treble clef, starting on Db4 and ending on Db5. The Db7 arpeggio is written in treble clef, starting on Db4 and ending on Db5. The key signature has four flats (Bb, Eb, Ab, and Db).

Bass Guitar

Blues Scales w/ Dominant 7th Arpeggios

(Concert G)

G7



(Concert C)

C7



(Concert F)

F7



(Concert Bb)

Bb7



(Concert Eb)

Eb7



(Concert A)

A7



(Concert Db)

Db7

